

HYUNDAI IONIQ 6 ELECTRIC

Quick Reference Guide



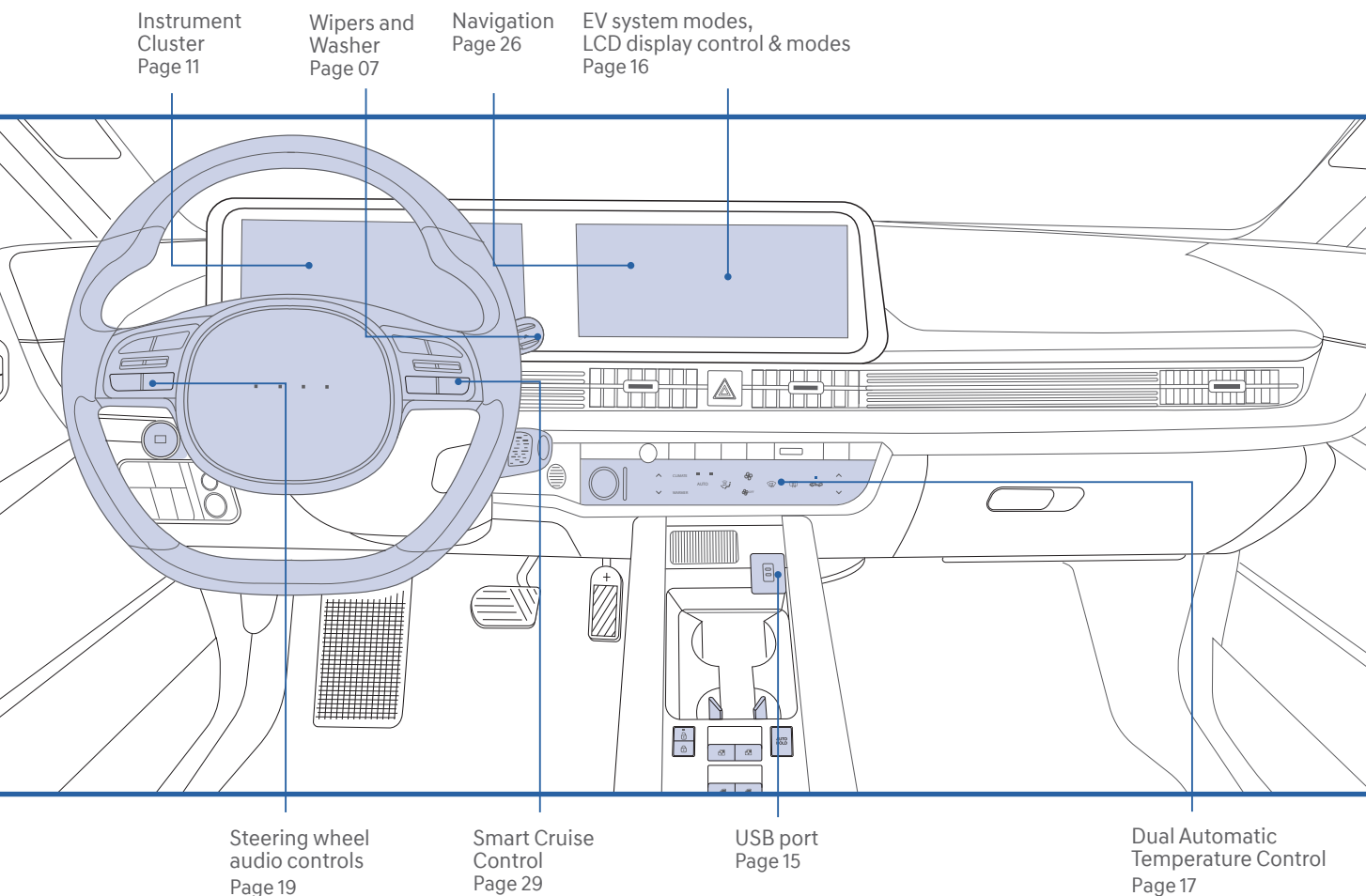
Roadside Assistance: 1-800-243-7766

Consumer Affairs: 1-800-633-5151

Sirius XM® Radio: 1-800-967-2346

Bluelink: 1-855-2BLUELINK
(1-855-225-8354)





HYUNDAI VEHICLE OWNER PRIVACY POLICY

Your Hyundai vehicle may be equipped with technologies and services that use information collected, generated, recorded or stored by the vehicle. Hyundai has created a Vehicle Owner Privacy Policy to explain how these technologies and services collect, use, and share this information.

You may read our Vehicle Owner Privacy Policy on the Hyundaiusa.com website at <https://www.hyundaiusa.com/owner-privacy-policy.aspx>. If you would like to receive a hard copy of our Vehicle Owner Privacy Policy, please contact our Customer Care Center at:

Hyundai Customer Care
P.O. Box 20850
Fountain Valley, CA 92728
800-633-5151
consumeraffairs@hmasa.com

Hyundai's Customer Care Center representatives are available Monday through Friday, between the hours of 6:00 AM and 5:00 PM PST and Saturday between 6:30 AM and 3:00 PM PST (English).

For Customer Connect Center assistance in Spanish or Korean, representatives are available Monday through Friday between 6:30 AM and 3:00 PM PST.



WARNING!

To reduce the risk of serious injury to yourself and others, read and understand the important SAFETY INFORMATION in your Owner's Manual.

Use this Quick Reference Guide to learn about the features that will enhance your enjoyment of your Hyundai. More detailed information about these features are available in your Owner's Manual.

FEATURES AND CONTROLS

Automatic climate control system	17
Aux. battery saver+	14
Charging door	05
Driver's main controls	03
Electric vehicle system modes	16
Hands free smart trunk	04
High voltage battery SOC (state of charge) gauge	13
Homelink wireless control system	09
Instrument cluster	11
Key hole access (driver door)	08
LCD display control	14
LCD display modes	14
Power trunk operation	04
Seat-Driver position memory system	03
Seat-Heated/Ventilated front seats	01
Seat-Power driver's seat adjustment	01
Seat-Folding rear seats	02
USB charger	15
USB port	15
Vehicle power gauge	13
Warnings and indicators	11
Wipers and washer	07
Wireless cellular phone charging system	15

INFOTAINMENT

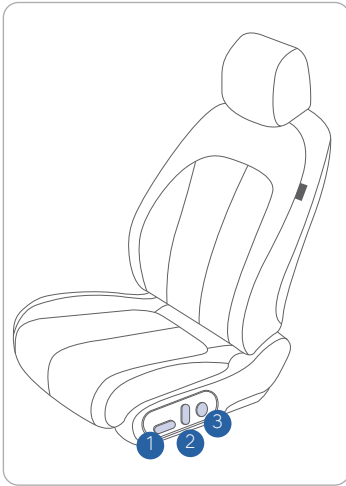
Apple CarPlay & Android Auto Setup	21
Bluelink connected car system	22
Bluetooth® audio quality tips	20
Bluetooth® operational tips	20
Bluetooth® phone operation	19
Bluetooth® phone pairing	19
Navigation	26
Radio mode	25
Steering wheel audio control	19
Voice recognition tips	22

DRIVING

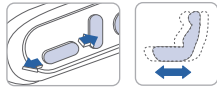
Blind-Spot Collision-Avoidance Assist (BCA)	32
Battery conditioning mode	34
Drive mode	36
Electronic parking brake (EPB)	30
Forward Collision-Avoidance Assist (FCA)	31
Highway Driving Assist (HDA)	30
Lane Keeping Assist (LKA)	31
Near field communication (NFC)	35
Regenerative brake level control paddles	27
Shift By Wire Gear Selector	27
Smart Cruise Control (SCC)	29
Tire pressure monitoring system (TPMS)	33

* Some vehicles may not be equipped with all the listed features.

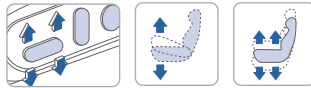
POWER DRIVER'S SEAT ADJUSTMENT



Forward and backward ①



Seat height ①



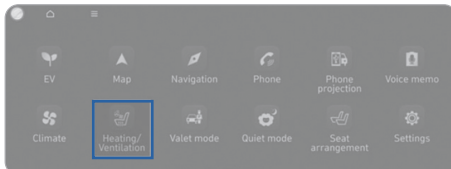
Seatback angle ②



Lumbar support ③



HEATED/VENTILATED FRONT SEATS

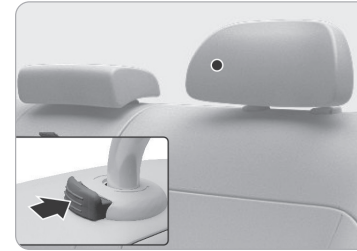


While the vehicle is running, touch Heating/Ventilation icon in the infotainment home screen. Press WARMER in the front climate control panel.

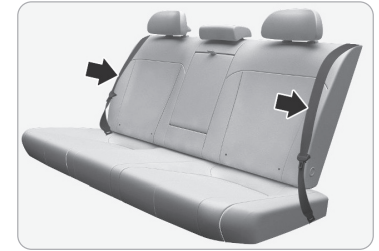
To activate seat warmer/air ventilation of each front seat, touch ▲ icon on the infotainment screen. Adjust the temperature by pressing either ▲ or ▼ icons.

FOLDING REAR SEATS

To fold down the rear seat back:



1. Set the front seat to the upright position and if necessary, slide the front seat forward.
2. Lower the rear head restraints to the lowest position.



3. Route the seat belt webbing to the outward of the rear seat to prevent the belts from being trapped behind or under the seats. Be wary of center belt routing and locking when lowering rear seat.

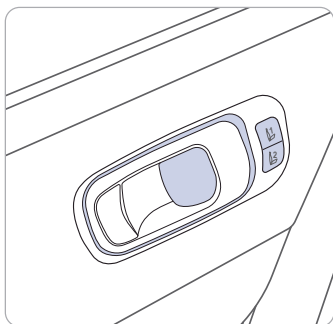


4. Fold the rear seats toward the front of the vehicle.



5. To use the rear seat, lift and pull the seats rearward. Pull the seatback firmly until it clicks into place. Make sure the seat back is locked in place.

DRIVER POSITION MEMORY SYSTEM



Storing Memory Positions

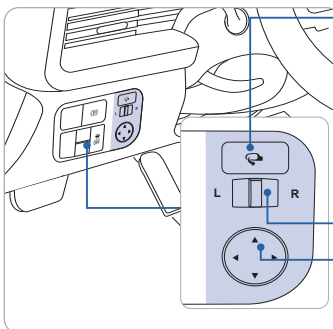
1. Shift to P (Park) while the Start/Stop button is in the ON position.
2. Adjust the driver's seat position, outside rearview mirror position, and head-up display height to the desired position.
3. Hold the button (1 or 2). The system will beep once and notify you 'Driver 1 (or 2) settings saved' will appear on the infotainment screen.

NOTE: The gear position must be in P (Park).

Recalling

Press the desired memory button (1 or 2). The system will beep once.

DRIVER'S MAIN CONTROLS

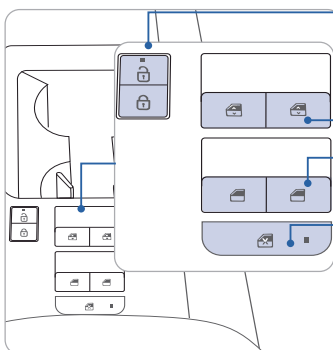


Folding outer side view mirrors

Press to fold/unfold mirrors.
Press the lock or unlock button on the smart key in AUTO position, and the mirrors will be folded or unfolded.

Outer side view mirror

- Press the L or R button.
- Adjust the mirror by using the directional switch.



Door lock

Locks/unlocks all doors.

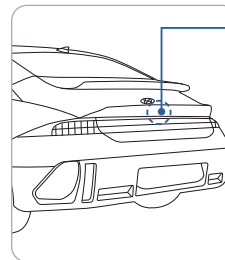
Window switches

- Front doors power window switches.
- Rear doors power window switches.

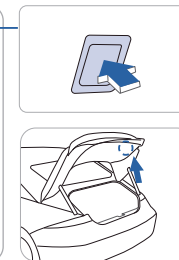
Power window and child lock button

Disables the power window switches on the rear passenger doors.

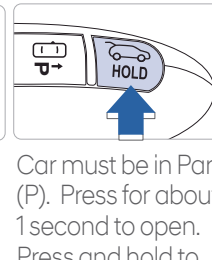
POWER TRUNK OPERATION



Press to open.
Smart key must be within the range.

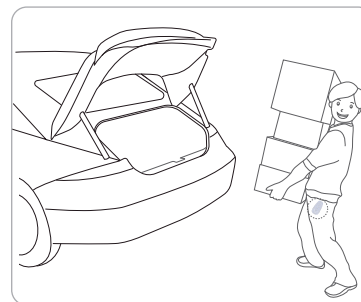


Press for about 1 second to open. Press and hold to close.



Car must be in Park (P). Press for about 1 second to open. Press and hold to close.

HANDS FREE SMART TRUNK



On vehicles equipped with Smart Trunk, the trunk can be opened with no-touch activation.

To activate

To enable Smart Trunk, go to User Settings mode on the LCD display, or Setup, then Vehicle on the Navigation display and under the Door menu make sure the Power Trunk and Smart Trunk boxes are checked.

Power Trunk Opening Height

For your convenience, there are four levels to adjust the trunk opening height. These can be selected in the User Settings menu.

1. Select User Settings from the LCD Display, or Setup - Vehicle from the Navigation screen.
2. Select Door Menu, then Power Trunk Opening Height
3. Choose between Level 1 ~ 3 or Full Open

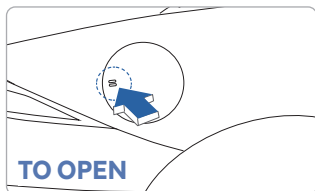
Hands Free Smart Trunk Operation

The trunk can be opened with no-touch activation after the below conditions are met:

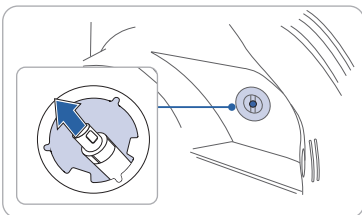
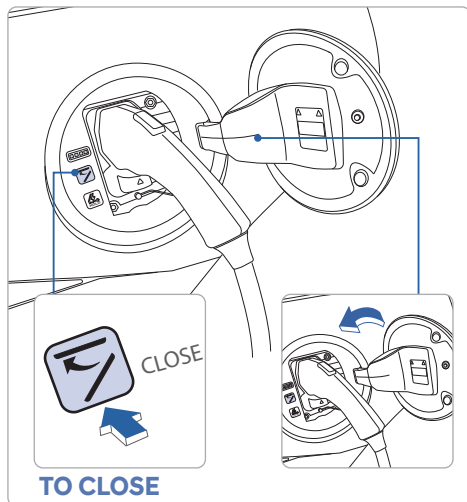
- After 15 seconds from when all doors are closed and locked
- You approach the rear of the vehicle (trunk area) for at least 3 seconds with the Smart Key in your possession

NOTE: Feature is default OFF from factory to avoid accidental activation.

CHARGING DOOR

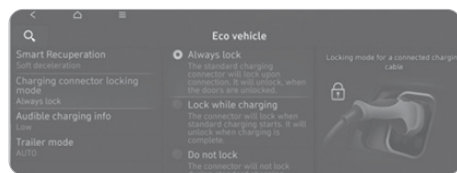


To open, while vehicle is unlocked, press on the outside of the charging door or use Voice Recognition. After recharging, install the bottom inlet cover first before installing the upper inlet cover. Press the close button to close the charging door.



Emergency Charge Connector Release:

If the charging cable will not release, open the trunk and pull the emergency cable.



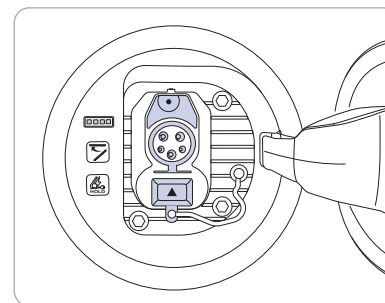
Charging Connector Lock

Locking mode for connected charging cable. Select Settings → ECO Vehicle → Charging Connector Locking Mode

	Always lock	Lock while charging	Do not lock
Before charging	○	×	×
While charging	○	○	×
Finished charging	○	×	×

Charging Status

Electric Charging door



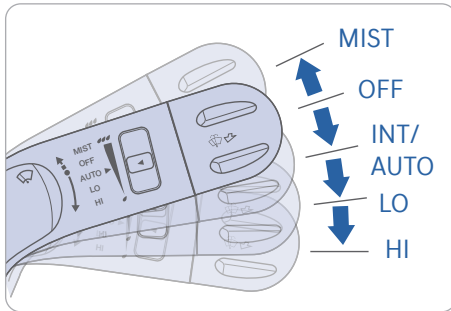
Charge Indicator light	SOC (%)
	0~24
	25~49
	50~74
	75~100

Scheduled Charging Override

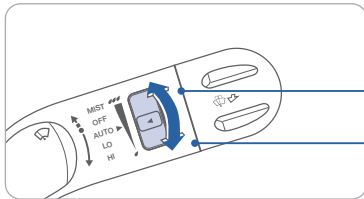


If you have a charge schedule set and would like to charge your vehicle outside that window, you can press and hold the button after plugging your vehicle in and it will start charging.

WIPERS AND WASHER

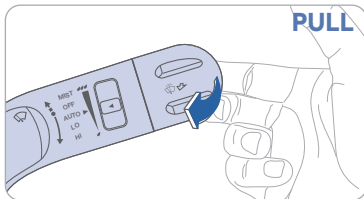


- MIST** - Single wipe
- OFF** - Off
- INT** - Intermittent wipe
- LO** - Low wiper speed
- HI** - High wiper speed



Intermittent wiper time adjustment
Move the speed control switch

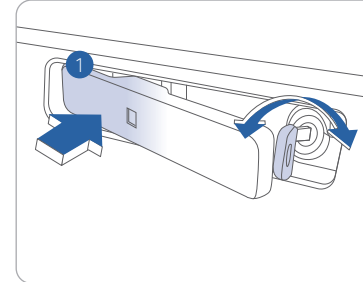
- Fastest wiper speed
- Slowest wiper speed



PULL

Windshield Washer
Pull the lever gently towards you to spray washer fluid on the windshield and to run the wipers 1-3 cycles.

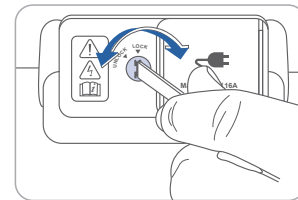
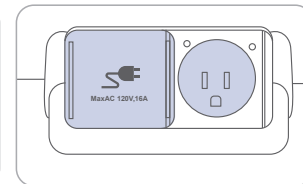
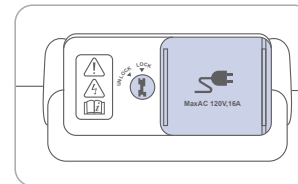
KEY HOLE ACCESS (driver door)



Press the front part ① of the door handle to pull out the rear part of the door handle. While keep pressing the front part of the door handle, insert the mechanical key to the lock.

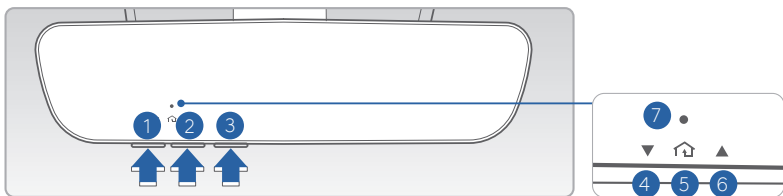
To lock door, turn the key clockwise. To unlock, turn the key counterclockwise.

How To Unlock AC Outlet Panel



Unlock the AC outlet panel by using the "tip" of the mechanical key or a flat blade screwdriver to turn the lock mechanism.

HOMELINK WIRELESS CONTROL SYSTEM

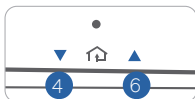


1. Press and release ①, ② or ③ button.
 - If the indicator ⑦ is turned ON in Orange, go to Step 3 (programming mode)
 - If the indicator ⑦ is continuously turned ON or flashes in Green rapidly several times, go to Step 2 (erasing mode)
2. Press and hold the button you wish to program for approximately 15- 25 seconds until the LED flashes in Orange for several times.
3. Hold the Garage Door Opener Original Transmitter near the HomeLink Mirror.
4. Press the Original Transmitter button until the indicator ⑦ is turned continuously ON or flashes in Green for approximately 10 seconds and it indicates the programing is completed.

NOTE: If the indicator ⑦ flashes in Green continuously, but if the garage door opener does not operate, please continue to follow Rolling Code Programming steps below.

Two Way Communication

Some new garage door openers come equipped with a two-way communication feature. If your garage door opener has this feature, please also continue to follow the Rolling Code Programming steps below. For more information and programming tips on two-way communication please visit www.homelink.com/compatible/two-waycommunication or call (800)-355-3515.



Indicator ④ & ⑥:

Flashes in orange → “Closing” & “Opening”

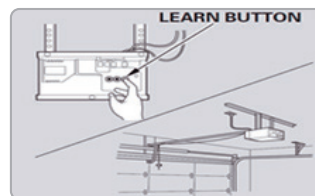
Solid Green → “Closed” & “Opened”

NOTE: If your garage door opener has Two-Way Communication functionality, it is possible for HomeLink to stop functioning the garage door shortly after initial programming, if the Two-Way Communication Programming wasn't properly completed. If you experience this, completing the “Programming a New HomeLink Button” and “Two-Way Communication Programming” will restore door operation.

Rolling Code Programming

- You may need a ladder to access your garage door opener.
- You may need help from a second person.
- Be prepared some of the steps are time sensitive.

1. Firmly press and release the “Learn”, “Smart”, or “Program” button of garage door opener on the ceiling while the indicator ⑦ flashes in Green. Once the button is pressed, you have approximately 30 seconds to initiate the next step.

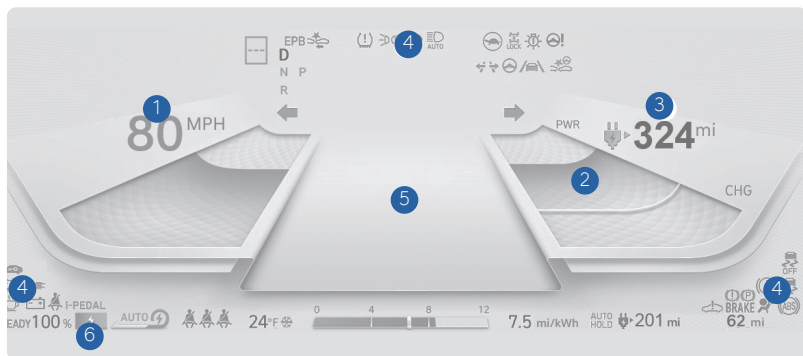


2. Return to the vehicle and firmly press the HomeLink button, hold for two seconds and release the button up to three times. Do not press the HomeLink button rapidly. At this point programming is complete and your device should operate.

For more detailed information, please refer to your Owner's manual or visit www.homelink.com or call (800) 355-3515



INSTRUMENT CLUSTER



- 1 Speedometer
- 2 Power/Charge gauge
- 3 Distance to empty
- 4 Warning and indicator lights
- 5 Cluster display
- 6 Battery SOC (State of Charge) gauge

WARNINGS AND INDICATORS

READY Ready indicator light	Service warning light	Power down warning light
Charging indicator	High voltage battery low level warning light	Air bag warning light
Seat belt warning light	Parking brake & brake fluid warning light	EPB Electric Parking Brake (EPB) warning light
Anti-lock Brake System (ABS) warning light	Electronic Brake force Distribution (EBD) System warning light	Motor Driven Power Steering (MDPS) warning light
Regenerative brake warning light	Low tire pressure warning light	AUTO HOLD indicator
Lane Safety Indicator	Forward Safety Warning Light	LED headlamp warning light
Master warning light	Electronic Stability Control (ESC) Indicator Light	Electronic Stability Control (ESC) OFF indicator light
Low beam indicator light	Immobilizer indicator	Turn signal indicator light
High beam indicator light	Light ON indicator light	Driver attention warning light
High beam assist indicator light		

Main indicators in cluster for Electric Vehicle

READY

Ready indicator light

When the vehicle is ready to be driven, this indicator is illuminated. When the ready indicator goes off or blinks, we recommend the vehicle be checked by an authorized HYUNDAI dealer.



Service warning light

If a problem with the electric vehicle control system occurs, the service warning light will illuminate. We recommend the vehicle be checked by an authorized HYUNDAI dealer.



Power down warning light

When the vehicle power should be limited for the safety of the electric vehicle, this warning light illuminates. Charge the battery immediately when the high voltage battery level is not enough.



Charging cable indicator

This indicator shows the charging status of the high voltage battery.

- When a charge cable is connected, the indicator illuminates in red. The approximate charge time will be displayed on the dash after a few minutes.

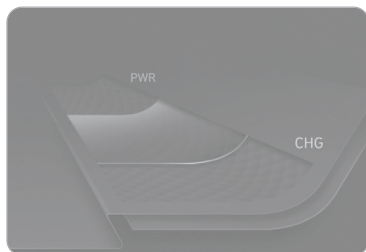


High voltage battery low level warning light

This warning light illuminates when the high voltage battery level is low. When the warning light turns ON, charge the battery immediately.

NOTE: DC Quick charge session is time limited and may not reach maximum charge in one session depending on initial battery % SOC. The maximum charge possible in Ioniq Electric is 94% SOC on a DC Quick charger which will show a slightly lower range than with Level-1 and 2 chargers with maximum possible charge to 100%SOC.

VEHICLE POWER GAUGE



Energy consumption Rate conditions:

POWER

Driving uphill or accelerating.

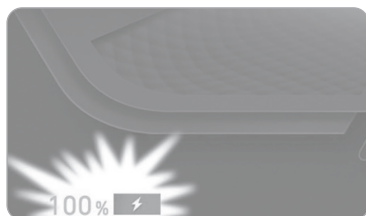
ECO

Normal Driving Conditions.

CHARGE

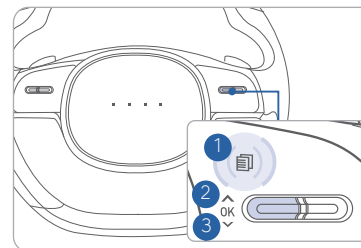
Using regenerative brakes (decelerating or driving downhill).

HIGH VOLTAGE BATTERY SOC (STATE OF CHARGE) GAUGE



The SOC gauge shows the charging status of the high voltage battery. "L(Low)" position on the indicator indicates that there is not enough energy in the high voltage battery. "H(High)" position indicates that the driving battery is fully charged. When there are 2~3 gauge bars (near the "L(Low)" area) on the gauge, the warning light turns ON and, the vehicle can drive an additional 12~18 miles depending on the driving condition. Charging is required.

LCD DISPLAY CONTROL



- 1 : MODE button for changing modes
- 2 : MOVE switch for changing items
- 3 : OK : SELECT / RESET button for setting or resetting the selected item

LCD DISPLAY MODES

Modes	Symbol	Explanation
Trip Computer		This mode displays driving information such as the tripmeter, fuel economy, etc.
Turn By Turn (TBT) (if equipped)		This mode displays the state of the navigation.
Driving Assist		<ul style="list-style-type: none"> This mode displays the state of the Advanced Lane Keeping Assist and Smart Cruise Control. This mode displays information related to Tire Pressure.
User Settings		In this mode, you can change settings of the doors, lamps, etc.
Warning		This mode displays warning messages related to one or more systems on your vehicle. Service by an authorized Hyundai dealer may be required.

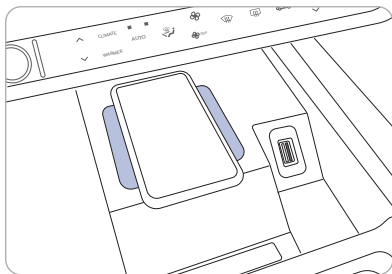
AUX. BATTERY SAVER+



The Aux. Battery Saver+ function monitors the charging status of the 12 V auxiliary battery. If the auxiliary battery level is low, the main high voltage battery charges the auxiliary battery.

NOTE: Do not touch the high voltage electric wire(orange), connector, and all electric components and devices when the function is activating.

WIRELESS CELLULAR PHONE CHARGING SYSTEM



There is a wireless cellular phone charging system in front of the cup holders. The system operates with all doors closed, and the Engine Start/Stop button in the ACC/ON/START position.

Wireless charging system can be disabled in the instrument cluster settings menu.

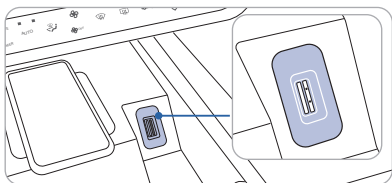
NOTE: The wireless cellular phone charging system supports only the Qi-enabled cellular phones (Qi).

NOTE: Do not place any metallic items such as coins, keys on the charger. Avoid placing credit cards on the charger as they may be damaged by the magnetic field.

The charging area may be warm while using wireless charging.

NOTE: Wireless charger will deactivate whenever a door is opened.

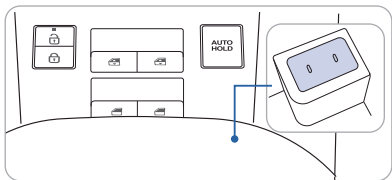
USB PORT



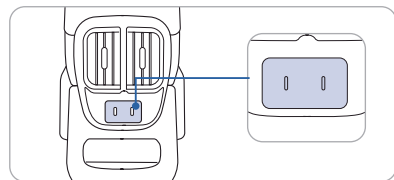
Use a USB-A cable to connect an external audio device and listen to it through the audio system in your vehicle.

USB CHARGER

FRONT USB CHARGER



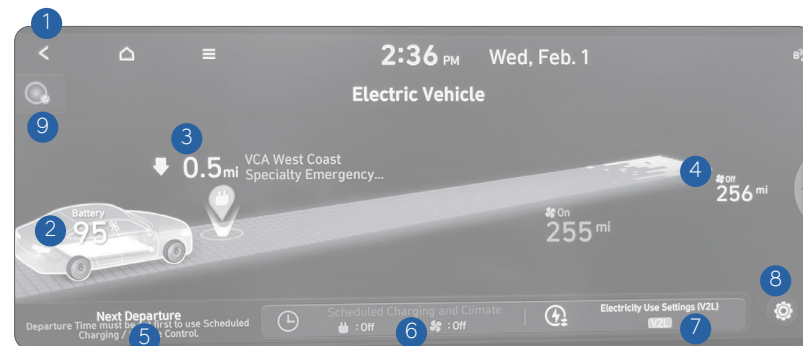
REAR USB CHARGER



The USB charger is designed to recharge batteries of small size electrical devices using a USB-C cable.

The electrical devices can be recharged when the Start/Stop button is in the ON or START position.

ELECTRIC VEHICLE SYSTEM MODES



- 1 Returns to the previous step.
- 2 View the current battery level.
If you press the vehicle image, the energy information screen appears.
- 3 Can search for nearby charging stations.
The details of charging stations displayed on the map screen may not match the actual information.
- 4 View the distance to empty for the current climate control settings.
The details of drivable range displayed on the map screen may not match the actual information.
- 5 Set the next departure time. ▶ See "Setting the next departure time."
- 6 Configure settings to perform charging and/or climate control according to the departure time. ▶ See "Scheduling a charge and climate controls."
- 7 Set an electricity usage limit. ▶ See "Setting an electricity usage limit."
• V2L: This technology uses the battery power of an electric vehicle to power electronic devices in the vehicle.
- 8 You can set to enable the Electric Vehicle mode. ▶ See "Configuring the EV settings."
- 9 Shows the solar roof charging status (if equipped).

AUTOMATIC CLIMATE CONTROL SYSTEM

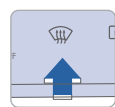


- 1 Driver's temperature control
- 2 Passenger's temperature control
- 3 Display the air flow direction
- 4 View climate infotainment screen
- 5 AUTO(automatic control)
- 6 Mode selection button
- 7 Fan speed up
- 8 Fan speed down / OFF
- 9 Front windshield defroster
- 10 Rear windshield defroster
- 11 Air intake control
- 12 Driver only mode
- 13 A/C (air conditioning) ON/OFF
- 14 Heating ON/OFF
- 15 SYNC
- 16 Ambient temperature display
- 17 Seat warmer/air ventilation infotainment screen

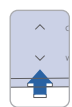


To view the climate information screen, select Climate in the main infotainment screen when the vehicle is ON.

DEFOGGING / DEFROSTING



1. Press the front windshield defrost control button.



2. Set the temperature control to the warmest setting.



3. Set the fan speed to the highest setting.

NOTE: To reduce the tendency of the glass fogging and also to improve visibility, keep the interior surface of the windshield clean by wiping it with a clean cloth and glass cleaner. In addition, select air intake control to the outside (fresh) air position whenever possible while operating the vehicle.

AUTOMATIC HEATING / AIR CONDITIONING



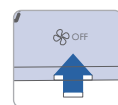
1. Press the AUTO button.



2. Set the temperature control to the desired setting.

Controls the modes, fan speeds, air intake and air-conditioning automatically.

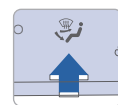
SYSTEM OFF



Pressing the OFF button will place the system in the OFF mode.

- Blower will turn off.
- Outside (fresh) air position will be selected.
- Vented air will be at last set temperature.

MODE SELECTION



Changes the direction of the air flow as follow.



AIR INTAKE CONTROL



Recirculated air position



Outside (fresh) air position

Air from the passenger compartment will be recirculated through the system and heated or cooled according to the function selected.

Air enters the vehicle from outside and is heated or cooled according to the function selected.

HEAT BUTTON



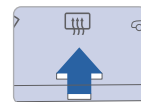
To manually control the system, push the HEAT button to turn the heater on.

DRIVER ONLY



If you press the DRIVER ONLY button, cold air mostly blows in the direction of the driver's seat.

REAR WINDOW DEFROSTER



Press to activate/deactivate the rear window defroster.

BLUETOOTH PHONE PAIRING

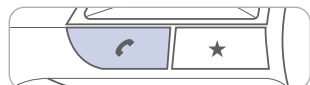
Pairing tutorials, phone compatibility and operational tips can be found through the Smart QR code using the QR reader application on your Smartphone.



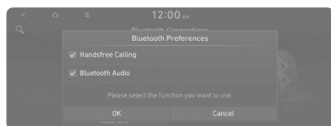
BLUETOOTH PHONE OPERATION

Phone setup (pairing phone)

1. Turn Bluetooth® on from your mobile phone. : Setup > Device Connections > Device Connections > Add New.



2. Select the function to connect.



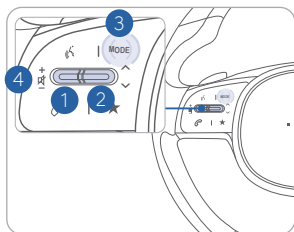
3. Turn on Bluetooth on the Bluetooth device to connect and select the vehicle system on the list of searched devices.



4. Bluetooth is connected.

NOTE: Vehicle must be parked to complete pairing process.

STEERING WHEEL AUDIO CONTROL



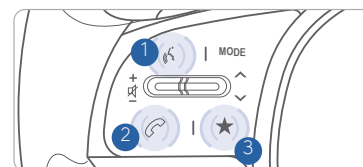
- 1 **VOLUME**
Raises or lowers the speaker volume. Press to Mute.
- 2 **SEEK / PRESET**
Changes the station.
- 3 **MODE**
Changes the audio source.
- 4 **MUTE**
Press the MUTE button to mute the sound
Press the MUTE button again to activate the sound

BLUETOOTH OPERATIONAL TIPS

In the following situations you or the other party may have difficulty hearing each other:

1. Keep the Bluetooth volume low. High level volume may result in distortion and echo.
2. When driving on a rough road, high speeds and/or with the window open.
3. When the air conditioning vents are facing the microphone and/or when the air conditioning fan is at the max speed.

Steering wheel bluetooth control



- 1 **VOICE RECOGNITION**
Activates voice recognition of a connected smartphone via phone projection. Activates system voice recognition on vehicles equipped with navigation.

- 2 **CALL/ANSWER/CALL END**
Answer a call or end a call. Press and hold to reject an incoming call.

- 3 **CUSTOM**
Use a custom function.
Press and hold to access the Custom Button settings screen.

To Answer a Call:

- Press the button on the steering wheel.

To Reject a Call:

- Press and hold the button on the steering wheel.

To Adjust Ring Volume:

- Use the VOLUME buttons on the steering wheel.

To Finish a Call:

- Press the button on the steering wheel.

BLUETOOTH AUDIO QUALITY TIPS

Ensure Bluetooth device volume is set to 100% for optimal audio quality. To adjust volume to your preference, utilize the head unit knob or steering wheel control.

When placing a call, reduce the volume of the head unit if distortion or echoing is present.

APPLE CARPLAY & ANDROID AUTO SETUP

SETTING UP ANDROID AUTO™

- From an Android Auto compatible device, download Android Auto app from the Google Play Store.
- Open the Android Auto app and proceed with the on-screen instructions to complete setup on the mobile device

HOW TO START ANDROID AUTO

- Press the SETUP button on the head unit
- Press the PHONE PROJECTION or DEVICE CONNECTIONS buttons, select Android Auto then select ENABLE ANDROID AUTO. [Accept all terms, Conditions and requests on the head unit and phone to use Android Auto]
- Connect the Android device with the vehicle's USB port using the manufacturer's cable provided with your phone
- From the vehicle's home screen, select the Android Auto button, where you'll see all the Android Auto supported apps

NOTE: Android Auto compatibility requirements:

Micro-USB cable that came with your phone, OS Android™ 5.0 or higher, compatible Android smartphone, data, and wireless plan for applicable feature(s). It is recommended to always update your phone to the latest operating system release

SETTING UP APPLE CARPLAY™

- On the head unit, press the SETUP button
- Press the PHONE PROJECTION or DEVICE CONNECTIONS buttons, select Apple CarPlay then select ENABLE APPLE CARPLAY. [Accept all terms, Conditions and requests on the head unit and phone to use Apple CarPlay]
- Connect the Apple CarPlay compatible iPhone with the vehicle's USB port using the manufacturer's cable provided with your iPhone
- From the vehicle's home screen, select the Apple CarPlay button, where you'll see all the Apple CarPlay supported apps

NOTE: Apple CarPlay compatibility requirements:

Apple Lightning cable, latest iOS software, iPhone 5 or later, data, and wireless plan for applicable feature(s). It is recommended to always update your phone to the latest operating system release

VOICE RECOGNITION TIPS

Your vehicle may be equipped with a Voice Recognition technology which allows drivers to operate their phones without having to take their eyes off of the road to minimize distractions.

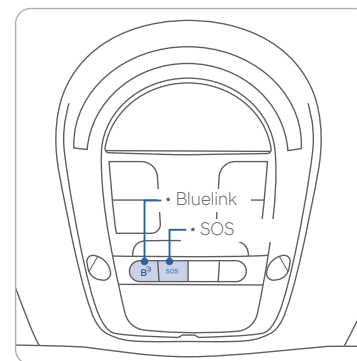
Voice recognition performance may be affected if driving with windows and sunroof open; when the heating-cooling system is on; when passing in a tunnel or when driving on rugged and uneven roads.

Quick reference on using voice commands:

To start a voice command, press the  button, the following commands are available:

Command	Function
More Help	Provides guidance on commands that can be used anywhere in the system.
Help	Provides guidance on commands that can be used within the current mode.
Calls <Name>	Calls <Name> saved in Contacts. Ex) Call "John"
Dial <Number>	Call can be made by dialing the spoken numbers. Ex) Call "123"
Phone	Provides guidance on Phone related commands. After saying this command, say "Call History", "Contacts" to execute the corresponding functions.
Contacts (Call by Name)	Displays the Contacts screen. After saying this command, say the name of a contact saved in the Contacts to automatically connect a call.
Dial Number	Displays the Dial number screen. After saying this command, you can say the number which you want to call.

BLUELINK CONNECTED CAR SYSTEM



Bluelink subscription is required. To enroll, please visit your dealership or MyHyundai.com.

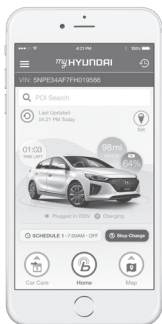
Press the **B³** button to access the voice-response menu of services.

- You can say:
Service Link
Roadside Assistance
Bluelink Account Services
Help
Cancel

Press the **SOS** button for SOS Emergency Assistance.

Visit HyundaiBluelink.com for more information or refer to your Bluelink User's Manual for detailed information on system operation. For immediate assistance with subscription services, please call 1-855-2BLUELINK (1-855-225-8354).

MyHyundai with Bluelink App



You can download the MyHyundai with Bluelink app to your compatible smart phone from the following sites:

- iPhone® — Apple® App Store
- Android™ — Google Play™

Visit HyundaiBluelink.com FAQs to see a list of compatible devices.

Remote Climate Control

Remote Climate Control* enables you to remotely enable climate control and turn on the front window defroster, ensuring a warm or cool car is ready to go when you are.

- To use this feature, you must have a Bluelink Personal Identification Number (PIN). To create or change your PIN, log in to www.MyHyundai.com.

Remember:

- Remote Start will automatically shut off after 10 minutes or after selected engine timer runs out.
- To continue to operate the vehicle, the proximity key must be inside the vehicle with the driver, prior to pressing the brake and being able to move the gearshift from the P (Park) position.

NOTE: Remote Climate Control is not available on all models. Remote Climate Control is only available for Push Start equipped vehicle with an Automatic Transmission. Remote Climate Control with Climate Control additionally requires Fully Automatic Temperature Control.

Preconditions:

- Ignition is OFF
- Alarm is armed (i.e., vehicle locked by key fob Remote Door Lock)
- Gearshift level is in the P (Park) position
- Brake pedal is not depressed
- Engine hood is securely closed
- All the doors are closed and locked
- The tailgate or trunk lid is closed
- The security / panic system is not activated
- The battery power is not low
- Vehicle is located in an open area
- It has been less than 4 days since last vehicle ignition off
- Vehicle located in area with good cell reception

Remote Climate Control will terminate:

- After 15 minutes or after selected engine timer runs out
- Brake is pressed without the proximity key inside the vehicle
- Alarm is triggered without the proximity key inside the vehicle
- Door / trunk is opened

Notice: Laws in some communities may restrict the use of the features that remotely start the engine. For example, some laws may require a person using the remote start feature to have the vehicle in view when doing so, or limit the length of time a vehicle engine may idle. Please check local and state regulations for any requirements and restrictions on remote starting of vehicles and engine idling time.

⚠ WARNING!

Do not remote start vehicle in an enclosed environment (i.e., closed garage). Prolonged operation of a motor vehicle in an enclosed environment can cause a harmful build-up of carbon monoxide. Carbon monoxide is harmful to your health. Exposure to high levels of carbon monoxide can cause headaches, dizziness or in extreme cases unconsciousness and / or death. Do not leave children or animals unattended in a vehicle while using the remote start function.

⚠ CAUTION!

If the vehicle's windshield wipers are left on when the vehicle was last driven, then the wipers will turn on if the remote start function is activated. To avoid damage to the wiper blades (i.e., due to heavy ice or snow accumulated on the windshield), please always turn the vehicle's windshield wipers off when parking the vehicle.

NOTE: For information for Digital Key pairing please refer to the Bluelink manual.

RADIO MODE



Press **POWER** button **A** to turn radio on.

• TUNING/LISTENING TO CHANNELS

1. Press **BAND** button **B** on screen to select FM/AM/SiriusXM®.
2. Select **SEEK/TRACK** **C** to desired channel.

NOTE A clear view of the southern sky helps ensure SiriusXM® radio reception.

• SETTING PRESET MEMORY BUTTONS

Press and hold any preset button **D** on the screen until an audible beep is heard to store current channel.

• ADJUSTING THE SOUND CONTROL

1. On the All Menus screen, press Setup > Sound > Position. The sound settings screen appears.
2. Adjust to desired setting.

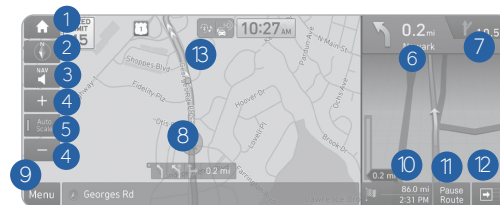


Individual volume settings for each audio source

1. Users can set the volume level of each source (FM, AM, SXM, USB, BT and so on) individually by adjusting volume knob.
2. Then AVN (Headunit) will save the last volume levels of each source in the system sound settings.
3. If users change the source, the volume will revert to the previously set volume for that source.

NAVIGATION

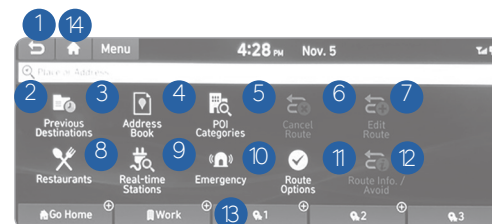
Basic features on the map screen



- 1 Displays the Home screen.
- 2 Used to change the map display mode.
- 3 You can adjust the volume of navigation or GPS warning sound.
- 4 Zoom in/out of map
- 5 The scale of the map automatically changes.
- 6 Guides the point to change the driving direction.
- 7 Guides the next point to change the driving direction.
- 8 Displays the lanes in different colors.
- 9 Displays quick menu items that can be used during a guidance.
- 10 Displays the remaining distance to the destination and the estimated time of arrival. For more details, touch the information item.
- 11 Pause Route (press and hold pause to cancel route)
- 12 Displays or hides the detailed guidance.
- 13 You can see the system information on the map.

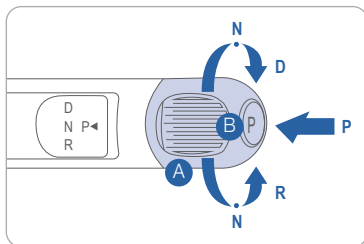
Destination search screen

Press **[NAV]** button in the navigation head unit, and finds a destination by using the **[Destination]** menu.



- 1 Returns to the previous step.
- 2 Search for a location by entering various types of keywords such as place name and address.
- 3 Select any of previous destinations to set as a destination.
- 4 Register the location or use the address book for setting a destination.
- 5 Search for POIs by category to set as a destination.
- 6 You can cancel guidance to the destination.
- 7 You can edit the current route so that you can travel via waypoints on the way to the destination.
- 8 You can easily search for restaurants.
- 9 You can set a destination after searching for EV charging stations.
- 10 You can easily search for emergency services.
- 11 You can change the route search criteria to resume routing.
- 12 You can see the entire route information to the destination.
- 13 You can register your home, office, or other frequently visited place as a favorite for ease of search.
- 14 The list of menu items appears.

SHIFT BY WIRE GEAR SELECTOR



To change the gear, depress the brake pedal and rotate the rotary gear shift dial.

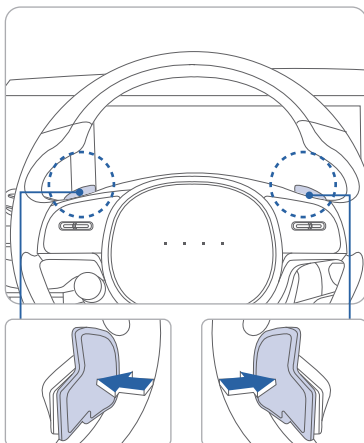
A Rotary gear shift dial

B P (Park) button

To shift the gear to P (Park), press the P button while depressing the brake pedal.

If you turn the vehicle off in R (Reverse), N (Neutral) or D (Drive), the gear will automatically shift to P (Park).

REGENERATIVE BRAKE LEVEL CONTROL PADDLES



The paddle shifter is used to adjust the regenerative braking rate from 0 to 3 during decelerating or braking.

- Left side (➡+): Increases regenerative braking and deceleration.
- Right side (←-): Decreases regenerative braking and deceleration.

The paddle shifter does not operate.

- When the two paddle shifters are pulled at the same time.
- When the Cruise Control system or Advanced Cruise Control system is activated.

NOTE: There is an available “Smart Automatic Regeneration” mode that will automatically adjust regenerative braking to slow the vehicle down as it approaches traffic. Refer to the owners manual for more detailed information.

Q. What are the advantages of regenerative braking?

A. Regenerative braking is a technology in which the electric motor connects to the generator to charge the battery during deceleration and braking. Using regenerative braking reduces energy loss and extends the drivable range, resulting in increased fuel efficiency. It is good to use regenerative braking in urban areas where braking is frequent.

Q. There is a feeling of deceleration during regenerative braking, is that normal?

A. When the vehicle decelerates during regenerative braking, there is a feeling of deceleration, so much so the driver can feel it. The higher the regenerative braking level, the greater the feeling of deceleration. This is normal.

NOTE: Pulling the (+) paddle shifter (➡+) while coasting may activate the one pedal driving feature, resulting in a vehicle stop. For more information, see “One pedal driving” in the owner's manual.

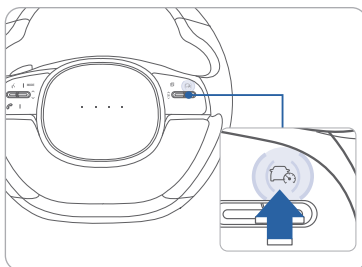
Q. How does regenerative braking differ by level?

A. There are four levels (from 0 to 3) of regenerative braking, and you can change the levels using the paddle shifter (➡+, ➡-, ➡-) on either side of the steering wheel.

Level	Description
1-3	The higher the regenerative braking level during coasting, the greater the vehicle deceleration and battery charging amount (regenerative amount).
0	The brake disc cleaning feature will run about 10 times. During operation, regenerative braking performance may be reduced. Because of this, the fuel efficiency may decrease.

NOTE: Depending on the drive mode (NORMAL/ECO/SPORT/SNOW), there are different levels of regenerative braking that you can use. For more information, see “Regenerative braking system” in the owner's manual.

SMART CRUISE CONTROL (SCC)



Turning on Smart Cruise Control
Press the Driving Assist () button to turn on Smart Cruise Control. The speed will be set to the current speed on the cluster.

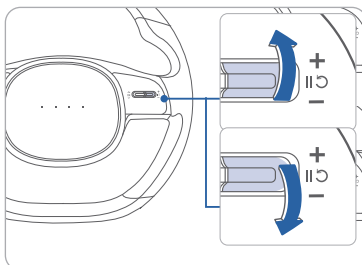
Setting vehicle distance

Each time the Vehicle Distance button is pressed, The headway changes as follows:



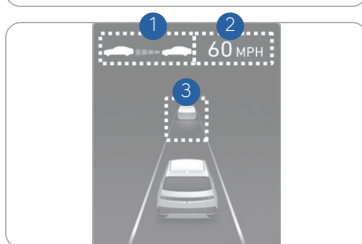
Increasing set speed

Push the + switch up and release it immediately. The set speed will increase by 1mph (1 km/h) each time the switch is operated in this manner.



Decreasing set speed

Push the - switch down and release it immediately. The set speed will decrease by 1mph (1 km/h) each time the switch is operated in this manner.

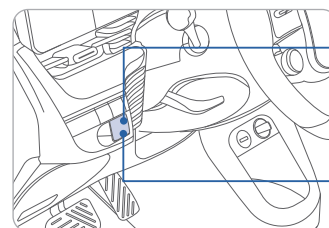


Note: Quick toggle up/down will change speed by 1 mph. Holding switch up/down will change speed by 5 mph.

Temporarily canceling Smart Cruise Control

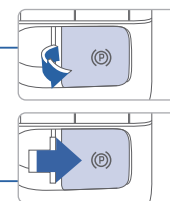
Press the II switch or depress the brake pedal to temporarily cancel Smart Cruise Control.

ELECTRONIC PARKING BRAKE (EPB)



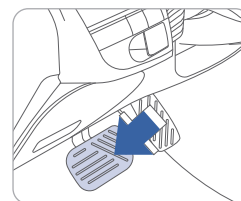
Applying

Stop the vehicle then pull up the EPB switch



Releasing

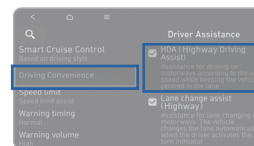
Press the EPB switch while depressing the brake pedal.



Automatic releasing

- When shifted to P: Depress the brake pedal and shift out of P to R or D.
- When shifted to N: Depress the brake pedal and shift out of N to R or D.

HIGHWAY DRIVING ASSIST (HDA) (if equipped)



Highway Driving Assist is designed to help detect vehicles and lanes ahead, and help maintain distance from the vehicle ahead, maintain the set speed, and help center the vehicle in the lane while driving on the highway.

NOTE: If the vehicle is turned off then on again, the system maintains the last setting.

With the vehicle on, select or deselect 'Driver Assistance → Driving Convenience' from the Settings menu to set whether to use each function.

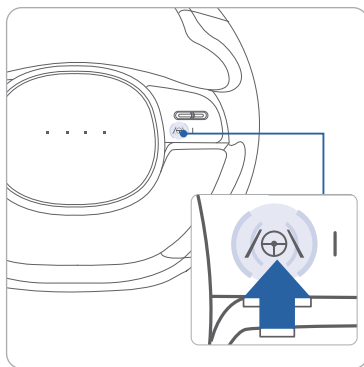
- If 'Highway Driving Assist' is selected, it helps maintain distance from the vehicle ahead, maintain the set speed, and helps center the vehicle in the lane.

HDA operating

- Driving on the highway main road.
- Press the Driving Assist button on the steering wheel.
- If entering the main road of highways while SCC and LFA is operating, HDA will be automatically activated.
- Vehicle speed is under 110 mph (180 km/h).

If all the mentioned conditions are satisfied, HDA is ENABLED and the indicator on the cluster will illuminate green.

LANE KEEPING ASSIST SYSTEM (LKA)



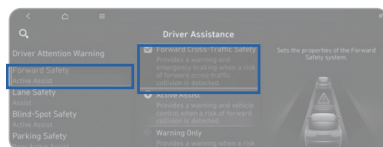
Lane Keeping Assist helps detect lane markers on the road with a front view camera and assists the driver's steering to help prevent the vehicle from departing the lane while driving.

LKA operates when the vehicle speed is between 40 mph and 120 mph.

- To turn on LKA, Press and hold the Lane Driving Assist button.
- To turn off LKA, Press and hold again the Lane Driving Assist button.

NOTE: In some circumstances, LKA may not activate as intended. ex: blurred lane condition, backlight, heavy fog, reflection of light due to water on the road, sharp bend in the road, etc. Please refer to the Owner's Manual for more information.

FORWARD COLLISION-AVOIDANCE ASSIST (FCA)



Forward Collision-Avoidance Assist is designed to help detect and monitor a vehicle, pedestrian or cyclist ahead in the roadway through front view camera and front radar to

warn the driver that a collision is imminent, and if necessary, apply emergency braking.

Setting Forward Collision-Avoidance Assist

The driver can activate FCA by placing the ignition switch to the ON position and by selecting:

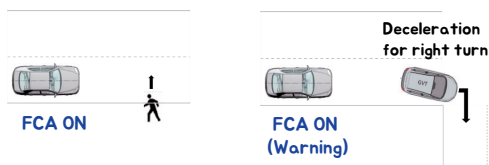
Driver Assistance → Forward Safety' from the Settings menu to set whether or not to use each function.

Warning Only- Braking assist is not applied

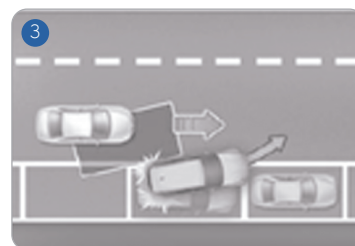
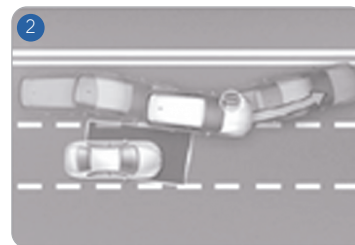
Off- FCA deactivates

FCA activation case

FCA activation example



BLIND-SPOT COLLISION-AVOIDANCE ASSIST (BCA)

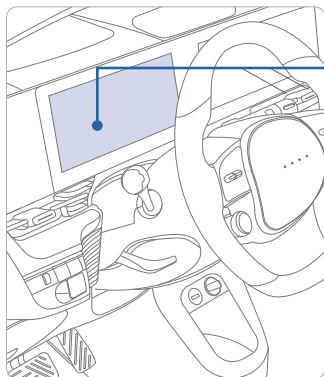


Blind-Spot Collision-Avoidance Assist is designed to help detect and monitor approaching vehicles in the driver's blind spot area and warn the driver of a possible collision with a warning message and audible warning. In addition, if there is a risk of collision when changing lanes or driving forward out of a parking space, Blind-Spot Collision-Avoidance Assist will help avoid collision by applying the brake.

- 1 Vehicle detection warning
- 2 Collision-avoidance assist (while driving)
- 3 Collision-avoidance assist (while departing)

To turn on/off select or deselect 'Driver Assistance → Blind-Spot Safety' from the Settings menu to set whether to use each function.

TIRE PRESSURE MONITORING SYSTEM (TPMS)



Low Tire Pressure Indicator /
TPMS Malfunction Indicator



Low Tire Pressure /
Tire Pressure Monitor /
TPMS Malfunction
Display
(shown on the cluster
LCD display)

LOW TIRE PRESSURE INDICATOR



Illuminates if one or more of your tires are significantly under-inflated.

TPMS MALFUNCTION INDICATOR

Blinks for approximately one minute, then remains illuminated when there is a malfunction with the TPMS. Inspect all tires and adjust the tire pressure to specification. If the lamp remains illuminated, we recommend the vehicle be checked by an authorized HYUNDAI dealer.

LOW TIRE PRESSURE / TIRE PRESSURE MONITOR / TPMS MALFUNCTION DISPLAY(LCD DISPLAY)

Select the Driving Assist mode  by pressing the mode button on the steering wheel to display tire pressure.

Tire pressures will display after driving a short distance. If a tire pressure drops lower than predetermined specification, the Low Tire Pressure Indicator  will illuminate and the cluster  display will indicate tire(s) requiring air.

NOTE: Environmental factors can affect the tire pressure. The two main environmental factors are ambient air temperature and elevation. Colder ambient air will reduce tire pressure, while hotter ambient air will increase tire pressure. High elevation may also increase tire pressure.

BATTERY CONDITIONING MODE



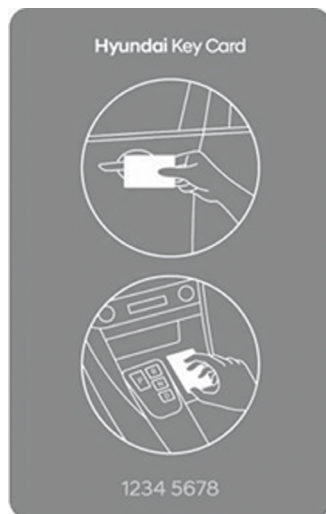
SETTING BATTERY CONDITIONING MODE

1. On the infotainment system, swipe the Home screen to the left to display the All menus screen.
2. On the All menu screen, select EV > (EV Settings) and select Battery Conditioning Mode.

- The battery temperature while driving will be maintained adequately.

NOTE: The battery conditioning mode will operate as you drive closer to the charger destination, not always immediately.

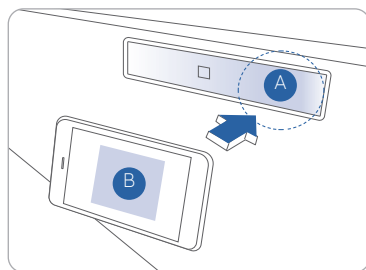
NEAR FIELD COMMUNICATION (NFC)



Pair Card Key authentication

Authenticate using NFC

Authenticate using BLE



To lock/unlock your vehicle using the NFC key card, hold the key card up to the center of the door handle **A**.

If you try to lock your vehicle with the NFC card under the following conditions, it will not work:

- The Smart Key is in the vehicle.
- The POWER button is in ACC or ON position.
- Any of the doors, hood and trunk are open.

NOTE: If you overlap and use the key card with other NFC-enabled cards such as a transportation card or credit card, it will not work.

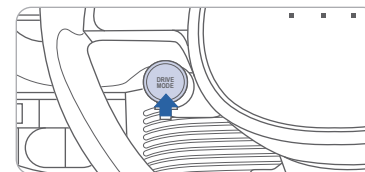
*For security reasons, the vehicle can only have one NFC key card paired to it at one time. Any time that a new Key card is paired to the car it will disable the previously paired Key Card.

DRIVE MODE

You can set the proper drive mode according to the road conditions or your driving habits.

Press the DRIVE MODE button on the steering wheel.

To change to snow mode, press and hold the button.



Level	Description
NORMAL	Ordinary driving mode.
ECO	Drive mode for fuel efficiency. This mode results in driving at a constant speed without rapid acceleration or deceleration.
SPORT	Drive mode for sporty and dynamic driving. This mode reacts sensitively when you press down on the pedal or rotate the steering wheel. The fuel efficiency may decrease.
SNOW	Drive mode for driving on icy or rainy roads which are slippery. This mode helps with stable acceleration and reduces tire slipping.

Tips for improving Distance to Empty

- If you operate the air conditioner / heater too much, the driving battery uses too much electricity. This may reduce the distance to empty. Therefore, it is recommended that you set the cabin temperature to 72 °F AUTO
- When using the heater or air conditioning system use the DRIVER ONLY or scheduled air conditioner / heater function
- Gradually depress and release the accelerator pedal when accelerating or decelerating

Tips you should know about Distance to Empty

- Distance to empty may depend on many factors such as the charge amount of the high voltage battery, weather, temperature, durability of the battery, geographical features, and driving style
- Especially distance to empty may vary significantly depending on previous driving patterns
- When previous driving patterns include high speed driving, resulting in the high voltage battery using more electricity than usual, the estimated distance to empty is reduced. When the high voltage battery uses little electricity in ECO mode, the estimated distance to empty increases.
- In cold weather, battery conditioning helps enhance electric vehicle performance by heating the vehicle in advance

MAINTENANCE

Scheduled Maintenance	Normal Usage		Severe Usage*	
Cooling System	Inspect	8,000 or 12 mos.	Inspect	Same As Normal
12V Auxiliary Battery Condition	Inspect	8,000 or 12 mos.	Inspect	Same As Normal
Brake Lines, Hoses, and Connections	Inspect	8,000 or 12 mos.	Inspect	Same As Normal
Disc Brakes and Pads	Inspect	8,000 or 12 mos.	Inspect	More Frequently
Brake Pedal	Inspect	8,000 or 12 mos.	Inspect	Same As Normal
Steering Gear Rack, Linkage & Boots	Inspect	8,000 or 12 mos.	Inspect	More Frequently
Air conditioning compressor, Air Conditioner Refrigerant and Performance	Inspect	8,000 or 12 mos.	Inspect	More Frequently
Drive Shafts and Boots	Inspect	16,000 or 24 mos.	Inspect	More Frequently
Climate Control Air Filter	Inspect Replace	8,000 or 12 mos. 16,000 or 24 mos.	Inspect Replace	More Frequently More Frequently
Gear Fluid	Inspect	32,000 or 48 mos.	Replace	80,000
Tire Rotation	Perform	8,000 or 12 mos.	Perform	Same As Normal
Coolant	Replace	1st: 120,000 or 120 mos. After: 24,000 or 24 mos.	Replace	Same As Normal
Brake Fluid	Inspect Replace	8,000 or 12 mos. 48,000 or 48 mos.	Inspect Replace	Same As Normal Same As Normal

*See Owner's Manual for details.

[Looking For more detailed information?](#) This Quick Reference Guide does not replace your vehicle's Owner's Manual. If you require additional information or are unsure of a specific issue, we recommend that you always refer to the vehicle's Owner's Manual or contact your authorized Hyundai dealer. The information contained in this Quick Reference Guide is correct at the time of printing; however, specifications and equipment can change without notice. No warranty or guarantee is being extended in this Quick Reference Guide, and Hyundai reserves the right to change product specifications and equipment at any time without incurring obligations. Some vehicles are shown with optional equipment.